



DEDICATED TO DETAIL

FOREMAN® Outdoor Locker Huts (PREMIUM Phenolic Lockers on Extruded Aluminum Profile)



Traditionally, manufacturers have fabricated both indoor and outdoor lockers from compact laminate, also known as solid phenolic. This is one of the most expensive materials due to its exceptional qualities and the complexity of its manufacturing process. With this in mind, we always try to minimize yield and reduce labor and production while thinking about our customer's needs.

FOREMAN® Locker Systems is proud to present our newest product - Outdoor Locker Huts. This product is available in three standard configurations: Locker Hut-7, Locker Hut-9, and Locker Hut-14. Nevertheless, we allow for custom and versatile configurations which gives our customer the ability to create an endless combination of various compartment sizes. This unique construction is made out of UVE-Protected Exterior Compact Laminate, has aircraft quality aluminum profiles, and a sloped prebuilt roof. Due to these materials and its exclusive design features, our product maximizes compartment space and is significantly lighter than others without compromising strength or durability.

PATENT PENDING

requires approximately 8-12 hours of installation by two workers. A detailed installation manual and our instructional video demonstrates the ease of installation and allows for anyone to construct our locker huts. Only a pre-built concrete base is needed for unit assembly. The superior construction of these lockers has been designed to complement any environment, including Recreational Facilities, Aquatic Parks, Beaches, Ski Resorts, and Amusement Parks.

This product ships knocked down for significant freight savings and

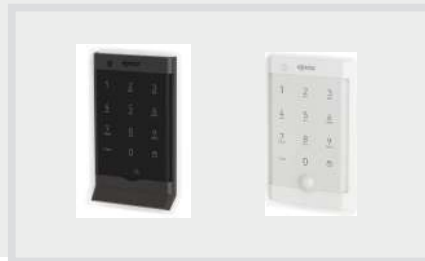
RECOMMENDED LOCK OPTIONS

Coin Operated Lock



SAG Safe-O-Mat 800 Coin Lock

Combination Lock



OJMAR OCS Pro

Hasp Lock



FOREMAN® Hasp Lock

FOREMAN® STOCK EXTERIOR DECORS



Polar Oak 5171



Sparrow 0768



Jade Green 0662



Hygenic Beige 0662

POPULAR COLOR COMBINATIONS





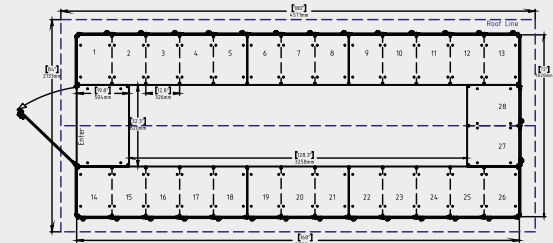
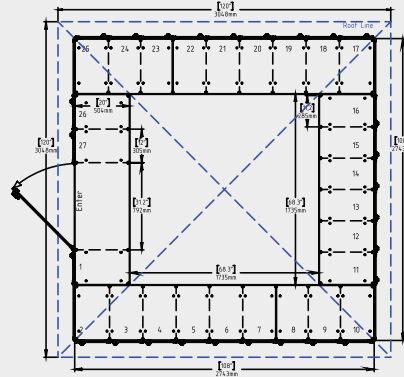
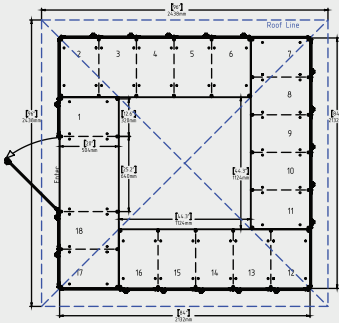
Locker Hut-7



Locker Hut-9



Locker Hut-14



FEATURES:

- ✓ **Wide selection of sizing and configurations** — The standard compartment sizes are 12" or 15" wide, 12" 15" 18" 24" 36" high, and 15" or 20" deep. Custom sizes and configurations are available for an additional cost.
- ✓ **Extra strength hinges and 175° door openings** - Doors are secured on integrated hinges embedded within the length of the anodized aluminum profile gives it the ability to swing 175° open. The wide swing opening is an ideal safety and convenience feature as it does not block walkways. Unlike traditional hinges, which are the weakest point on most lockers, our design provides

heavy-duty, anti-theft construction. The added strength and security of this hinge is ideal for high-traffic and heavy use areas.

- ✓ **Optional Power Outlets and USB chargers** — A Power Outlet or USB charger can be conveniently mounted to the interior of each compartment. Mounting options are either wall-mounted through the back panel or side-mounted with hard-wiring via the aluminum channels.
- ✓ **Extensive selection of color options** available from various collections in solid colors, wood grain, marbles, granites, and more from well-known

manufacturers such as FUNDERMAX®, Formica® and Wilsonart®. Stock colors currently include Wood Grain Polar Oak Decor and Solid colors: Beige, Jade Green and Sparrow by FUNDERMAX®

- ✓ Coin operated SAGlocks are our standard option for our locker huts, although this is not limited. Our **Selection of locks** is pre-engineered to work flawlessly with our locker systems. We offer RFID-locks, mechanical and digital combination locks, key locks, and hasp locks to accommodate a user's personal padlock. It is also possible to integrate other lock options upon request.
- ✓ **Unique 10 Year Warranty.**

SPECIFICATIONS:

Model	Size	Number of Lockers (Openings)	Shipping Weight
Locker Hut-7	84"x84"	36 (2-Tier), 54 (3-Tier), 72 (4-Tier), 90 (5-Tier)	1600 lbs
Locker Hut-9	108"x108"	54 (2-Tier), 81 (3-Tier), 108 (4-Tier), 135 (5-Tier)	2400 lbs
Locker Hut-14	72"x180"	56 (2-Tier), 84 (3-Tier), 112 (4-Tier), 140 (5-Tier)	2550 lbs

- ✓ Doors are processed on CNC machines with a finished radius edge.
- ✓ Aircraft quality aluminum profile with integrated hinges.
- ✓ 3/8" solid phenolic doors with optional 1/2" phenolic doors.
- ✓ Shelves are constructed with 3/8" phenolic material.
- ✓ 1/8" solid phenolic walls and back

- panels (3/8" thick option for larger compartments).
- ✓ Shoe shelves are available as an addition.
- ✓ Custom designed shelves are available as an option.
- ✓ Optional clothes bar with the choice for an integrated hook.
- ✓ HÄFELA aluminum 3-prong rotating

- hook.
- ✓ 3M brushed aluminum number plates.
- ✓ Optional FOREMAN Hasp Lock (Compatible with most padlocks).
- ✓ Option to include open cubbies and shelving.
- ✓ Option for custom widths, heights, and depths.

APPLICATIONS:

Recreational Facilities, Aquatic Parks, Beaches, Universities and Schools, Ski Resorts, Amusement Parks and More.