

FOREMAN USA[®]
ski lockers



Designed by Skiers
for Skiers

foremanlockers.com

ski storage

FOREMAN[®] Locker Systems is known for innovative designs and state of the art locker construction. We bring that same design and engineering excellence to our comprehensive line of Ski Lockers.

FOREMAN[®] Ski Lockers can be found in ski resorts and ski rental facilities across the nation. There is a FOREMAN[®] Ski locker to meet the needs of every ski application.

Constructed from durable Phenolic Panels (HPL) and aircraft grade aluminum, our Ski Lockers are built to last. Every order is custom built to your specifications.

Our Tahoe and Aspen Ski Lockers are available in six convenient sizes to easily integrate our lockers into your available space. 12, 15, 18, 20, 21, and 24- inch widths are available.

All FOREMAN[®] Phenolic lockers come with a 20-Year limited warranty for interior installations and a 10 Year warranty for exterior installations.

TABLE OF CONTENTS

FOREMAN Ski Lockers	1
Tahoe Series	2-3
Aspen Series	4-5
Bolton Series	6-8
QBL Ski Storage	9
QBL Ski Lockers	10-11
Ski Boot Dryers	12-14
Ski & Snowboard Racks	15
FOREMAN Benches	16-17
Accessories	18
Lock Options	19
FOREMAN Ski Locker Features	20
QBL Ski Locker Features	21

Tahoe Series Ski Locker

QBL

QBL Dryers
Compatible with
Standard Sizes

The FOREMAN® Tahoe Series Ski Locker is our most versatile ski locker design. It's solid phenolic construction can be configured with boot horns, boot dryers, and hooks for an exceptional user experience.

Suitable for both indoor and outdoor applications, Tahoe Series Ski Lockers are built to last, featuring solid phenolic panels, stainless steel hinges, and stainless steel fasteners.

Steamboat Springs, CO

Tahoe Series Features:

- > **Ships Assembled**
For Easy Installation
- > **Bottom Crossbar**
Prevents Skis from Sliding Out
- > **Multiple Hooks:**
J-Hooks & 3 Prong Rotating Hooks
- > **Drainage Holes and Ventilation**
To Prevent Moisture and Assist with Airflow
- > **Boot Horns**
Black Powder-Coated Aluminum Boot Horns with Urethane Cups
- > **QBL Drying System**
Mounted 2B Slim, 2B, 4B, 5B Compatible
- > **Mirror**
Door Mounted Mirror
- > **Mesh Pocket**
Door Mounted Mesh Storage Pocket
- > **LED Lighting and USB Outlets**
Wired into the unit



Standard Sizes

- > 12"W x 22" x 80"H
- > 18"W x 22" x 80"H
- > 15"W x 22" x 80"H
- > 21"W x 22" x 80"H
- > 24"W x 22" x 80"H

Stock Color Options



Grey

Black

Maple

Tosca

*100's of additional color options available



CHATEAU EAU CLAIRE

Aspen Series Ski Locker

The FOREMAN® Aspen Series Locker is our top choice for ski lockers in remote areas. This unique unassembled design comes with detailed assembly instructions, utilizing flat-packed shipping to limit freight costs and enhance convenience.

The Aspen Series is inspired by our exceptional Signature line of phenolic lockers and designed with for outdoor use. Constructed from aircraft-grade aluminum profiles, phenolic panels, and stainless steel fasteners, it provides a highly durable, weatherproof structure built to last for decades.

Aspen Series Features:

- > **Ideal For Outdoor Use**
Constructed with Aircraft Grade Aluminum Integrated Hinges and Waterproof Phenolic Material, the Aspen Design is Ideal for Long-term Outdoor Exposure.
- > **Ships Unassembled**
Modular Construction Ships Unassembled and Flat-Packed to Minimize Shipping Costs to Remote Locations
- > **Integrated Aluminum Hinges with 180-Degree Opening**
- > **Standard 4" Adjustable Legs**
- > **Drainage Holes and Ventilation**
- > **Sloped Top**
- > **Mirror**
Door Mounted Mirror
- > **Mesh Pocket**
Door Mounted Mesh Storage Pocket
- > **Rubber Mat**
- > **3-Prong Hook**



Standard Sizes

- > 12"W x 20" x 80"H
- > 15"W x 20" x 80"H
- > 20"W x 20" x 80"H

Stock Color Options



Grey

Black

Maple

Tosca

*100's of additional color options available

BOLTON Series Ski Locker

Introducing the FOREMAN® Bolton Series Ski Locker, the ultimate ski storage solution. Available in a variety of models compatible with both indoor & outdoor use. Sleek, durable, and uniquely designed, these lockers offer unmatched functionality to keep your gear organized and ready for your next adventure.

Transform your ski storage with the Bolton Series and experience the difference.





Details

*Indoor & Outdoor Use
Residential & Commercial Use*

Material & Construction:

- › Assembly Required
- › Made from Waterproof Phenolic Aircraft-Grade Aluminum for Strength and Longevity
- › Integrated Hinges and Flush Side Panels for a Clean Look with No Through Bolts
- › Standard Hasp Padlock (options available for additional security)

Standard Sizes

- › Widths: 15", 18", 24", 30", 36"
- › Depth: 22"
- › Height: 80" + 4" Legs

Compartments & Accessories:

- › Mirror (8" x 12"), Mesh Pockets, J-Hooks, 3-Prong Pooks, and Rubber Floor Mats (3/8" thick)
- › Built-In Utility Shelf to Keep Accessories Organized

QBL Boot Drying System

- › Available with 2B Slim, 2B, 4B, and 5B Configurations Depending on Locker Width
- › Ensures Ski Boots are Dry, Warm, and Ready for Use

Helmet Shelves and Additional Hooks

- › For Users Needing Dedicated Storage for Helmets, Gloves, and Other Small Items

WIDTH	CAPACITY	INCLUDED HOOKS	OPTIONAL UPGRADES
15"	2-Person	(2) J ; (1) 3-Prong	BOOT HORNS: (2) Pair DRYERS: 2B Slim, 2B
18"	2-Person	(2) J ; (1) 3-Prong	BOOT HORNS: (2) Pair DRYERS: 2B Slim, 2B
24"	4-Person	(3) J ; (1) 3-Prong	BOOT HORNS: (4) Pair DRYERS: 2B Slim, 2B, 4B Dryer
30"	4-Person	(1) J ; (2) 3-Prong	BOOT HORNS: (4) Pair DRYERS: 2B Slim, 2B, 4B SHELVES: (3) with Horns or Dryers, or (5) Standard
36"	5-Person	(2) J ; (2) 3-Prong	BOOT HORNS: (5) Pair DRYERS: 2B Slim, 2B, 4B ,5B SHELVES: (1) with Horns or Dryers, or (5) Standard

Designs

Stock Colors:



White North Sea Maple



Model A: Equipped with Boot Dryers | Indoor Use Only



B-15-2BV-00



B-18-2BHS-00



B-24-4BHS-00



B-30-4BHS-2S



B-30-4BHS-2S

Models B & C: Equipped with Boot Horns & Shelves | Indoor & Outdoor Use



B-15-4F-00



B-30-8F-2S



B-36-10F-1S



B-36-00-5S



B-36-00-5S

QBL

QBL is a renowned provider of premium ski storage and drying solutions, including advanced boot dryers, modular racks, and durable accessories. Known for efficiency and cutting-edge design, QBL products are trusted by ski resorts and rental facilities worldwide. As an authorized dealer, we proudly offer QBL's full range of products to meet diverse customer needs.



QBL

AWARD-WINNING STORAGE DRYING
& DISPLAY SYSTEMS FOR YOUR
SPORTS EQUIPMENT_

North American Authorized Dealer

Depot Locker

- › Smart Storage
- › Efficient Drying Units
- › Interior Steel Floor Plates
- › Locker Accessories
- › Custom Designed Doors
- › Powder Coated Galvanized
Steel Construction

Standard Sizes

- › Widths: 350mm, 400mm, 500mm, 600mm
- › Depth: 550mm
- › Height: 2280mm



QBLAWARD-WINNING STORAGE DRYING
& DISPLAY SYSTEMS FOR YOUR
SPORTS EQUIPMENT_**North American Authorized Dealer**

Depot Locker Sequence

- › Smart Storage
- › Efficient Drying Units
- › Interior Steel Floor Plates
- › Locker Accessories
- › Custom Designed Doors
- › Powder Coated Galvanized
Steel Construction



Standard Sizes

- › Widths: 350mm, 400mm, 500mm, 600mm
- › Depth: 550mm
- › Height: 2280mm



QBLAWARD-WINNING STORAGE DRYING
& DISPLAY SYSTEMS FOR YOUR
SPORTS EQUIPMENT_**North American Authorized Dealer**

Dryer Supreme Hybrid 2B

Specifications

Width	Capacity	Depth	Height
[inches]	[pairs of boots]	[inches]	[ft]
11.8	2	11.417	2.198

Power Consumption	Voltage
*4 Hour Quick Mode : 100 W	110 V
*8 Hour Quick Mode : 85 W	



Dryer Supreme Hybrid 4B

Specifications

Width	Capacity	Depth	Height
[inches]	[pairs of boots]	[inches]	[ft]
11.8	4	11.417	4.462

Power Consumption	Voltage
*4 Hour Quick Mode : 100 W	110 V
*8 Hour Quick Mode : 85 W	



QBL

AWARD-WINNING STORAGE DRYING
& DISPLAY SYSTEMS FOR YOUR
SPORTS EQUIPMENT_

North American Authorized Dealer

Dryer Supreme Hybrid 2B Slim

Specifications

Width	Capacity	Depth	Height
[inches]	[pairs of boots]	[inches]	[ft]
5.9	2	2.4	4.43
(14 including horns)			

Power Consumption Voltage

*4 Hour Quick Mode : 100 W	110 V
*8 Hour Quick Mode : 85 W	



Boot Dryer Force

Specifications

LENGTH Feet	CAPACITY PAIRS OF BOOTS	POWER*W
4.921	48	260/5680
5.905	60	260/5680
6.561	72	510/7730
7.874	84	510/7730
9.843	108	510/7730
13.123	144	2X510/7730
HEIGHT 7.382 Feet	WIDTH 2.624 Feet	VOLT. 230/3X400 V



QBLAWARD-WINNING STORAGE DRYING
& DISPLAY SYSTEMS FOR YOUR
SPORTS EQUIPMENT_**North American Authorized Dealer**

Boot Dryer Panel 10

Specifications

Width	Capacity	Depth	Height
[inches]	[pairs of boots]	[inches]	[ft]
24	10	16.14	6.73

Power Consumption	Voltage
*Without Heating: 150 W	110 V
*With Heating: 2050 W	

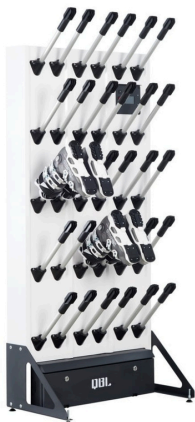


Boot Dryer Panel 15

Specifications

Width	Capacity	Depth	Height
[inches]	[pairs of boots]	[inches]	[ft]
35.43	15	18.11	6.88

Power Consumption	Voltage
*Without Heating: 170 W	110 V
*With Heating: 2600 W	



QBL

AWARD-WINNING STORAGE DRYING
& DISPLAY SYSTEMS FOR YOUR
SPORTS EQUIPMENT_

North American Authorized Dealer

Universal Rack

- > Four product lines
- > The frame
- > Grip of skis: Fork system
- > Galvanized steel and powder coating
- > Mobile racking system
- > Adjustment systems
- > Water tub in the frame



Storage capacities

millimeters

Lengths	Capacity	Widths	Height
1500	60	800	2420
1800	72	800	2420
2000	84	800	2420
2400	108	800	2420
3000	132	800	2420
4000	168	800	2420

BENCHES



FOREMAN® Benches

Heavy Duty Floor Mount Bench

- 5/8" Top With (2) Stainless Steel Posts
- Available in Hundreds of Colors and Patterns
- 36", 48", 60", and 72" Lengths are Available



Two Sided Phenolic Bench with Coat Hooks

- 1/2" Phenolic Construction
- Integrated Coat Rack, Shoe Rack, Back Support, and Seat Cushion
- Size: 41" Wide, 28.7" Deep, 65.7" High



Extra Large Free Standing Bench

- Constructed From Waterproof Phenolic Panels, Aluminum, and Stainless Steel Fasteners
- Available in Colors to Match or Complement Any Room Décor
- Sizes Available: 24" x 48" and 30" x 70"



ACCESSORIES



Lock Options

Mechanical

PAD LOCK HASP



KEY LOCK



COMBINATION



Electronic

BASIC ELECTRONIC



KEYPAD AND RFID



ADVANCED W/ MANAGEMENT



RFID and Smart Lock Technology

RFID



ADVANCED SMART LOCK



ADVANCED RFID



FOREMAN Ski Locker Features

J HOOKS



ROTATING HOOKS



K-HOOK



USB POWER OUTLET



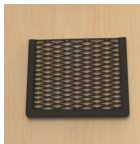
SHELF



MIRROR



MESH POCKET



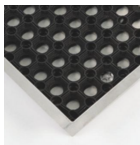
BOOT HORNS



BOOT DRYERS



ANTI-SLIP MAT



TOE KICK PANEL



THRESHOLD



QBL Ski Locker Features

DOOR MODELS



LOCKING SYSTEMS



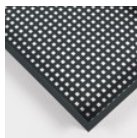
TOP COVERS



SIDE COVERS



FLOOR PLATES



TOE KICK PANEL



ANTI-SLIP MATS



ACCESSORIES STORAGE



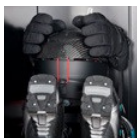
CORROSION PROTECTION



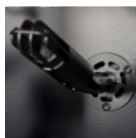
OPENING NOZZLE SYSTEM

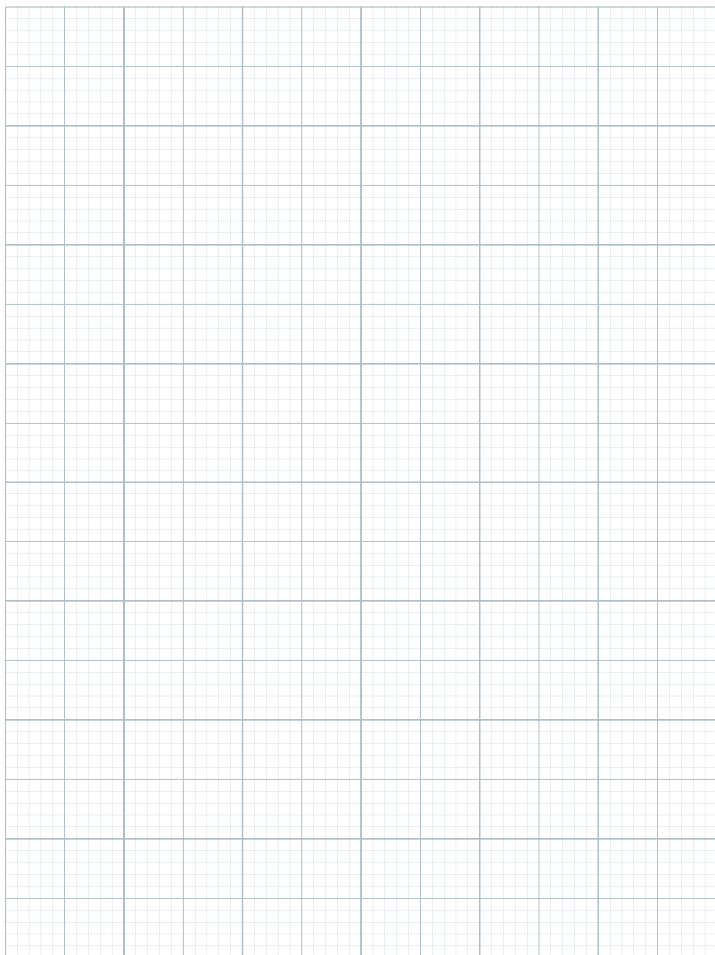


SMART STORAGE



HEATING SYSTEM









FOREMAN® Locker Systems
41330 Date St., Murrieta,
CA 92562, United States

T: (951) 677-1955

Email: info@foremanlockers.com

foremanlockers.com