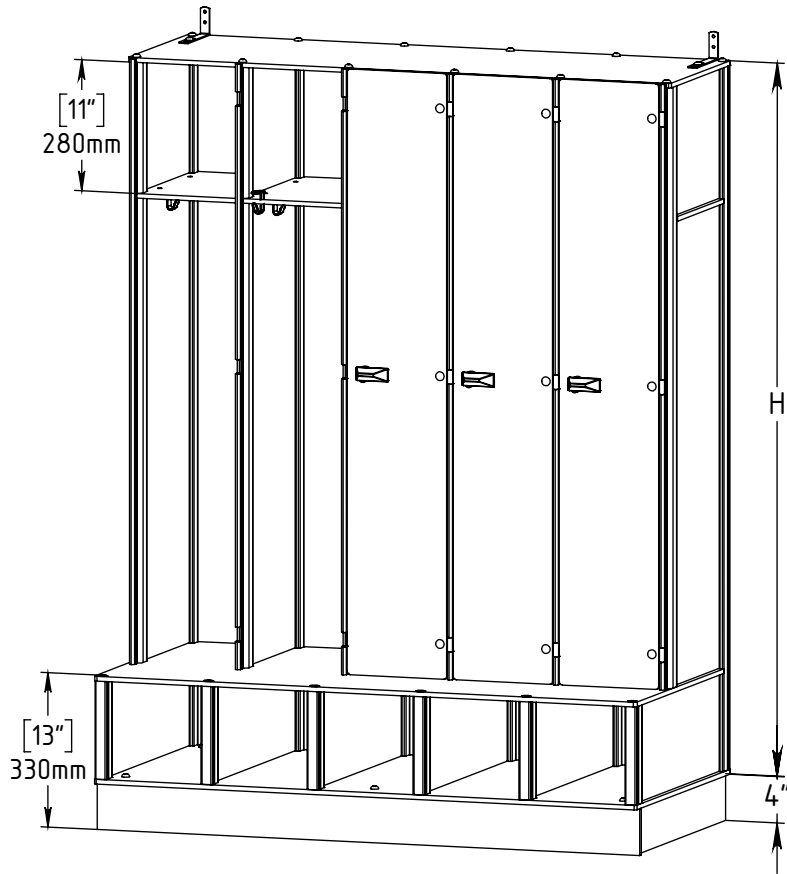
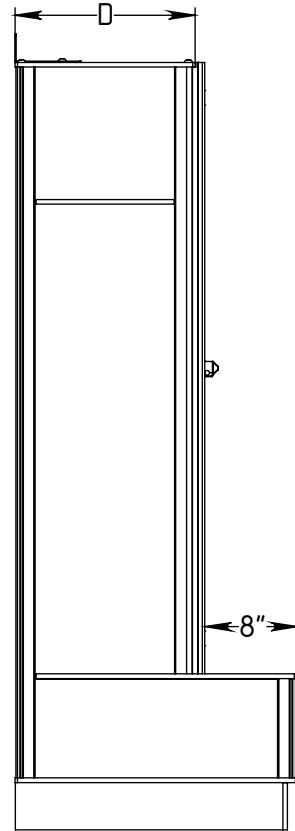


**FOREMAN** Single-Tier Locker with Cubbies&Bench

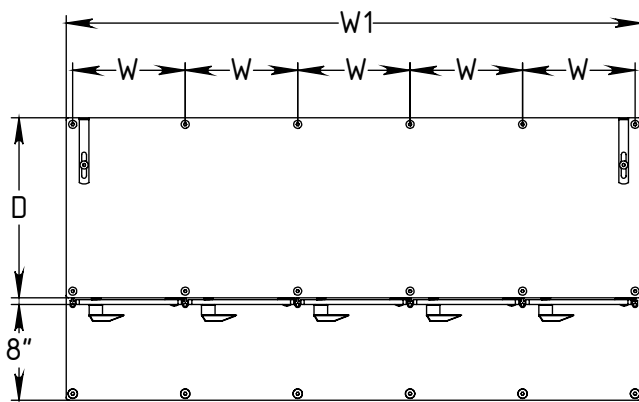
3D VIEW



SIDE VIEW



TOP VIEW



**STANDARD SIZE OPTIONS**

OA Width (W1)	48"	
	1219mm	
Width CTC (W)	9.5"	12"
	241mm	305mm
Depth (D)	12"	15"
	305mm	381mm
Height no Legs/Base (H)	60"	71"
	1524mm	1800mm

**FOREMAN**  
locker systems

PROPRIETARY AND CONFIDENTIAL

THE INFORMATION CONTAINED IN THIS DRAWING IS THE SOLE PROPERTY OF FOREMAN PRODUCTS LLC. ANY REPRODUCTION IN PART OR AS A WHOLE WITHOUT THE WRITTEN PERMISSION OF FOREMAN PRODUCTS LLC IS PROHIBITED

DESCRIPTION

Single-Tier Locker with Cubbies&Bench

NAME

KB

DATE

01.01.2020

MRG APPR.

NB

--

SCALE:

--

Page 1 of 2