

FOREMAN[®]
locker systems

DEDICATED TO DETAIL



FOREMAN[®] Outdoor Cabinetry

Built with Class A Fire-Rated FUNDERMAX[®] Compact Laminate

As Expert Manufacturers of Solid Phenolic Lockers for Public Facilities for Over 15 years, we are Proud to Announce a New Line of Outdoor Cabinetry Designed for the Residential Marketplace. This Line Combines the Same High-End Materials and Unique Construction from Aircraft Quality Aluminum Extrusions with the Highest Ranked Austrian FUNDERMAX[®] Exterior Compact Laminate.

FOREMAN[®] TRADITIONAL SOLID PHENOLIC CABINETRY



CONSTRUCTED OF:

- Weatherproof UV-Protected FUNDERMAX[®] HPL with Solid Phenolic Core
- Mostly 3/8" thick Phenolic Material. Back Panels are 1/8" thick with a 3/8" thick Nailing Panel for Securing to the Wall
- Concealed 110 Degree Opening and Self-Closing Stainless Steel Hinges
- All Stainless Steel Hardware
- Full Extension Ball Bearing Stainless Steel Drawer Slides
- Solid HPL Drawer Box with an Inset Bottom Phenolic Panel for Extreme Durability
- 3/4" thick FUNDERMAX[®] Exterior HPL Counter Tops or Option to Outsource for Custom Material
- Countertop with Built-In Under-Mount Drip Edge Preventing Water from Penetrating the Storage Area.

FEATURES:

- 10 Year Manufacturer Warranty against Fading or Warping
- A Variety of Colors, Sizes and Configurations
- 4" Stainless Steel Pull Handle
- Choice of Optional Weather Resistant Locks (Hasp, Key Cam or Combination Locks).

FOREMAN[®] PREMIUM PHENOLIC CABINETRY

(Ideal for Large Items Such as Full Size Wardrobes or Tall Lockers)

CONSTRUCTED OF:

- Solid Frame Aircraft Quality Aluminum Extrusions with Integrated Hinges.
- 3/8" or 1/2" thick Doors.
- 1/8" Back and Side Panels
- "F" Channel Aircraft Quality Aluminum Profiles to Retain Rigidity and Prevent the Shelves from Warping or Bowing.

FEATURES:

- 10 Year Manufacturer Warranty against Fading or Warping.
- Adjustable Shelves with a 250 lb load capacity.
- 4" Aluminum Legs with 1" Adjustability.
- 4" Stainless Steel Pull Handles.
- Lockable Stainless Steel Slide Latch.

ADD ONS INCLUDE:

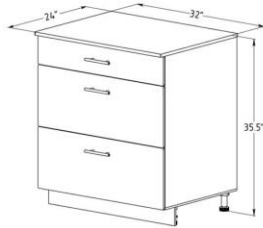
- 3/8" Finished End Panel
- Overlapping Counter Tops
- Slope Tops with Rain Channels
- Stainless Steel Hardware



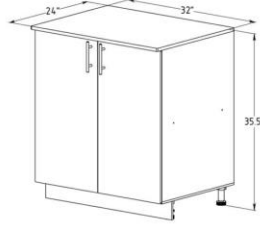
Let Us Help You Decorate Your Patio, Garden or Back Yard! All Models are Available in Custom or Standard Modular Solutions with a Variety of Chests and Full Size Vertical Cases. Constructed from the Same Weather Resistant FUNDERMAX® Compact Laminate that can Withstand Freezing Temperatures, these Cabinets will Serve You for Years to Come.

PRE-ASSEMBLED OUTDOOR LOWER CABINETRY

Please see several inventory models of our lower cabinetry, pre-assembled and ready to ship. Custom sizes are available upon request. Our standard material for counter top is color-through FUNDERMAX® 3/4" thick Solid Phenolic with beige or grey core to match the cabinetry color.



Cabinet with 3 Drawers
Model OCL013224



Cabinet with 2 Inner Shelves
Model OCL023224



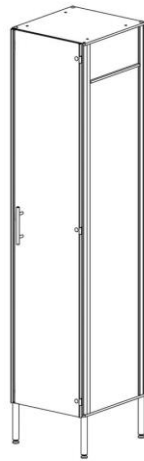
Cabinet with a Drawer
Model OCL033224

FULL HEIGHT AND UPPER CABINETRY

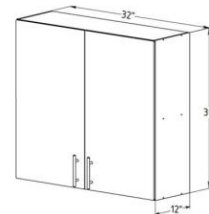
Here are two full height cabinets available in 71" or 80" heights with 4" or 8" tall legs, from our FOREMAN® PREMIUM Line, made out of solid phenolic and aluminum extruded profile. These are shipped knocked down and require minimal assembly. On the right you can see an example of traditional upper cabinetry which comes assembled and ready to install.



Wardrobe W36" x H71" x D24"
with 3 Inner Shelves Model OCF013624



Single- or 2-Tier Column W18"xH71" x D24"
with a Shelf Model OCF021824



Upper Cabinet with 2 Shelves
Model OCU013224

Decorative Back Panel

Various sizes of 3/8" solid phenolic material are available to fill the space between upper and lower cabinetry, matching the color of the doors.

Additional Shelf beneath Upper Cabinetry

The shelf secures to the back panel and has 10" depth, and width to match that of the upper cabinetry.

STANDARD SETS OF OUTDOOR KITCHEN CABINETRY

We carry multiple standard assemblies for you to choose from. The cabinetry is available in our 4 stock inventory colors, with other colors available upon request. A factory rep installation is optional for your convenience.

STOCK INVENTORY COLOR OPTIONS

Charcoal 0077 Beige 0627 Sparrow 0768 Polar Oak 5171

